

CLASSIC IV FOOT SWITCH



The LINEMASTER Classic IV foot switch series (replacing the Classic III) continues the line of high quality and durability in both single and twin variations as standard models. The Classic IV is a versatile

foot switch that can be utilized in a wide range of applications from medical to medium duty industrial. The rugged cast aluminum housing offers environmental protection of NEMA Types 1, 2, 4, 6, 6P & 13 as well as EN 60529 Degree of Protection IP68. The guarded ver-

sions offer a heavy gauge steel full guard that covers the entire foot switch for both the single and twin models. Do you have special requirements? Please contact Linemaster for a quotation for a custom variation built to your specifications, including cordset, paint finish and labeling.

LINEMASTER Switch Corporation
Tel (860) 974-1000

29 Plaine Hill Road, P.O. Box 238

Woodstock, Connecticut 06281-0238 USA
Fax (800) 974-FOOT(3668)

www.linemaster.com/ds/classic4/

CLASSIC IV



IT'S ALL ABOUT FIT, FORM & FUNCTION

FEATURES:

One Piece Cast Aluminum Housing



Single Stage Momentary Contact



Non-Skid Feet To Minimize Movement



Divider Bar on Twin Models aids in Reducing Accidental Operation of Multiple Pedals at Once



Single Pedal 1/2"-14 N.P.T. Threaded Conduit Opening is Standard



Twin Pedal 3/4"-14 N.P.T. Threaded Conduit Opening is Standard



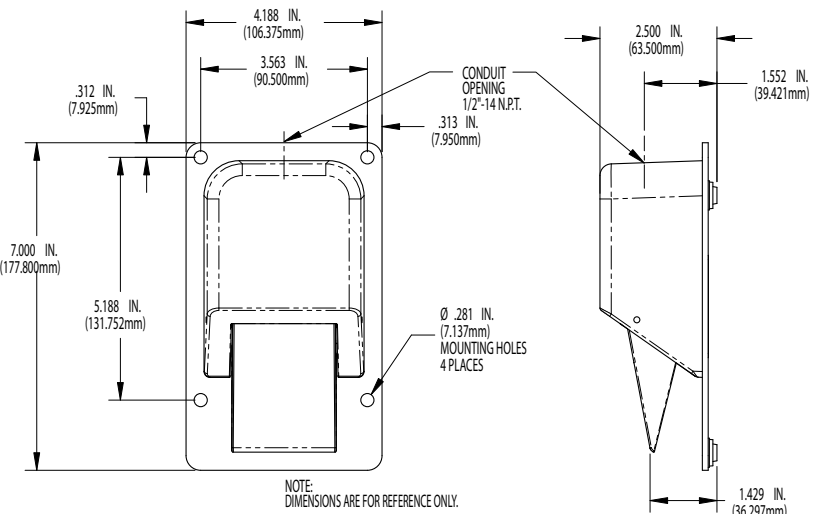
Heavy Gauge Steel Full Guard Available



EN 60529 Degree of Protection IP68



Environmental Protection of NEMA Types 1, 2, 4, 6, 6P & 13



Dimensions (W x H x D)

SINGLE MODEL

SIZE: 4.188 in x 2.500 in x 7.000 in
106.375 mm x 63.500 mm x 177.800 mm
WEIGHT: 1.75 lbs. .794 kgs.

TWIN MODEL

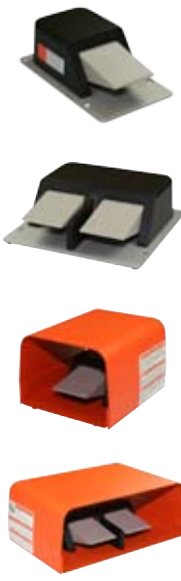
SIZE: 7.375 in x 2.625 in x 7 in
187.325 mm x 66.675 mm x 177.800 mm
WEIGHT: 3.625 lbs. 1.644 kgs.

GUARDED SINGLE MODEL

SIZE: 6 in x 4.5 in x 7 in
152.400 mm x 114.300 mm x 177.800 mm
WEIGHT: 6 lbs. 2.722 kgs.

GUARDED TWIN MODEL

SIZE: 11 in x 4.5 in x 7 in
279.400 mm x 114.300 mm x 177.800 mm
WEIGHT: 10 lbs. 4.536 kgs.



SPECIFICATIONS

	Catalog No.	Description	Type	Circuit	Form	Electrical Rating
	88SH1-05	Momentary	Guarded	SPDT	C	16A 125-250 VAC 1/2 H.P. 125-250 VAC 250 VAC Maximum
	88SH2-05	Momentary	Guarded	DPDT	C	
	TWIN 88SH1-05	Momentary	Guarded	SPDT	C	
	TWIN 88SH2-05	Momentary	Guarded	DPDT	C	
	88SN1-05	Momentary	Unguarded	SPDT	C	
	88SN2-05	Momentary	Unguarded	DPDT	C	
	TWIN 88SN1-05	Momentary	Unguarded	SPDT	C	
	TWIN 88SN2-05	Momentary	Unguarded	DPDT	C	

www.linemaster.com/ds/classic4/